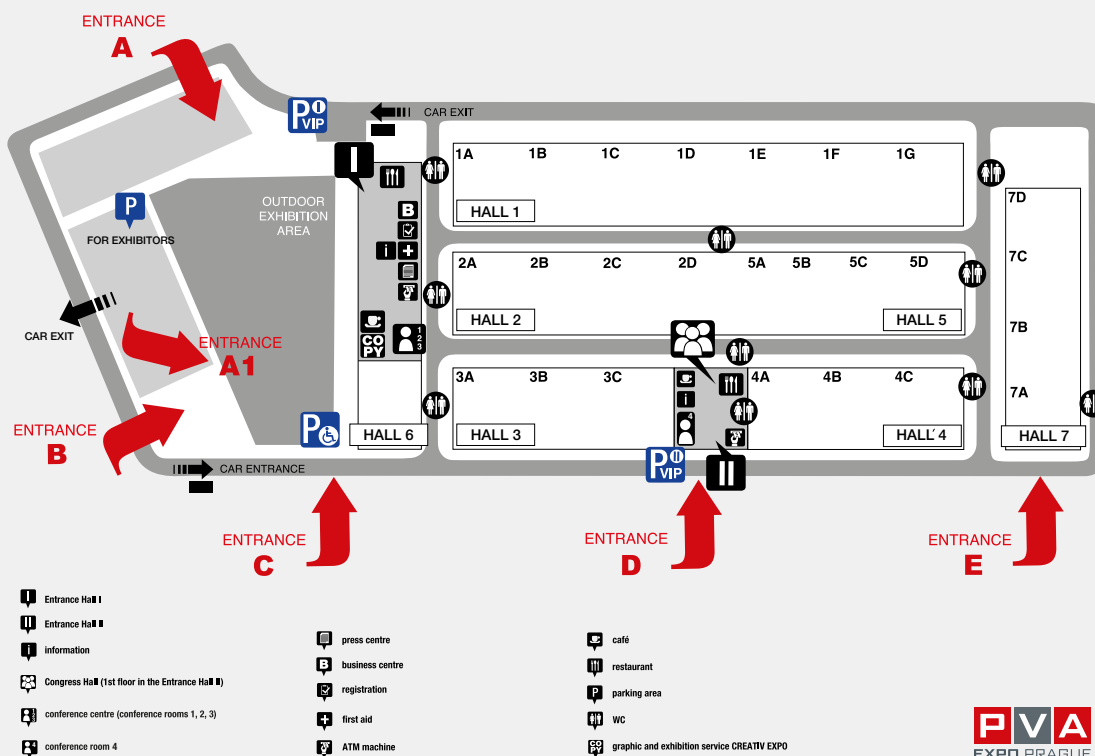


Technical Specification of the PVA EXPO PRAGUE Exhibition Centre

Plan of the PVA EXPO PRAGUE Exhibition Centre



PVA
EXPO PRAGUE

Exhibition Halls at PVA EXPO PRAGUE

Building	Gross Area	The Internal Dimensions of the Hall	The Inner Side Height of the Hall	Inner Medium Height of the Hall
Entry hall I	2,700 m ²	30 m x 90 m	3.5 m	7.5 m
Entry hall II	1,600 m ²	40 m x 40 m	11 m	Built-in floor
Hall 1	9,840 m ²	40 m x 246 m	4 m	8.5 m
Hall 2	4,000 m ²	40 m x 100 m	9 m	9 m
Hall 2D	800 m ²	40 m x 20 m	9 m	9 m
Hall 3	4,000 m ²	40 m x 100 m	9 m	9 m
Hall 4	4,200 m ²	40 m x 105 m	9 m	9 m
Hall 5	5,000 m ²	40 m x 125 m	9 m	9 m
Hall 6	1,170 m ²	30 m x 39 m	3.5 m	7.5 m
Hall 7	4,000 m ²	40 m x 100 m	4.5 m	4.5 m



www.pvaexpo.cz

PVA EXPO PRAGUE
Beranových 667,
199 00 Prague 9,
Czech Republic

GPS:
Loc: 50°7'41.662"N,
14°30'51.679"

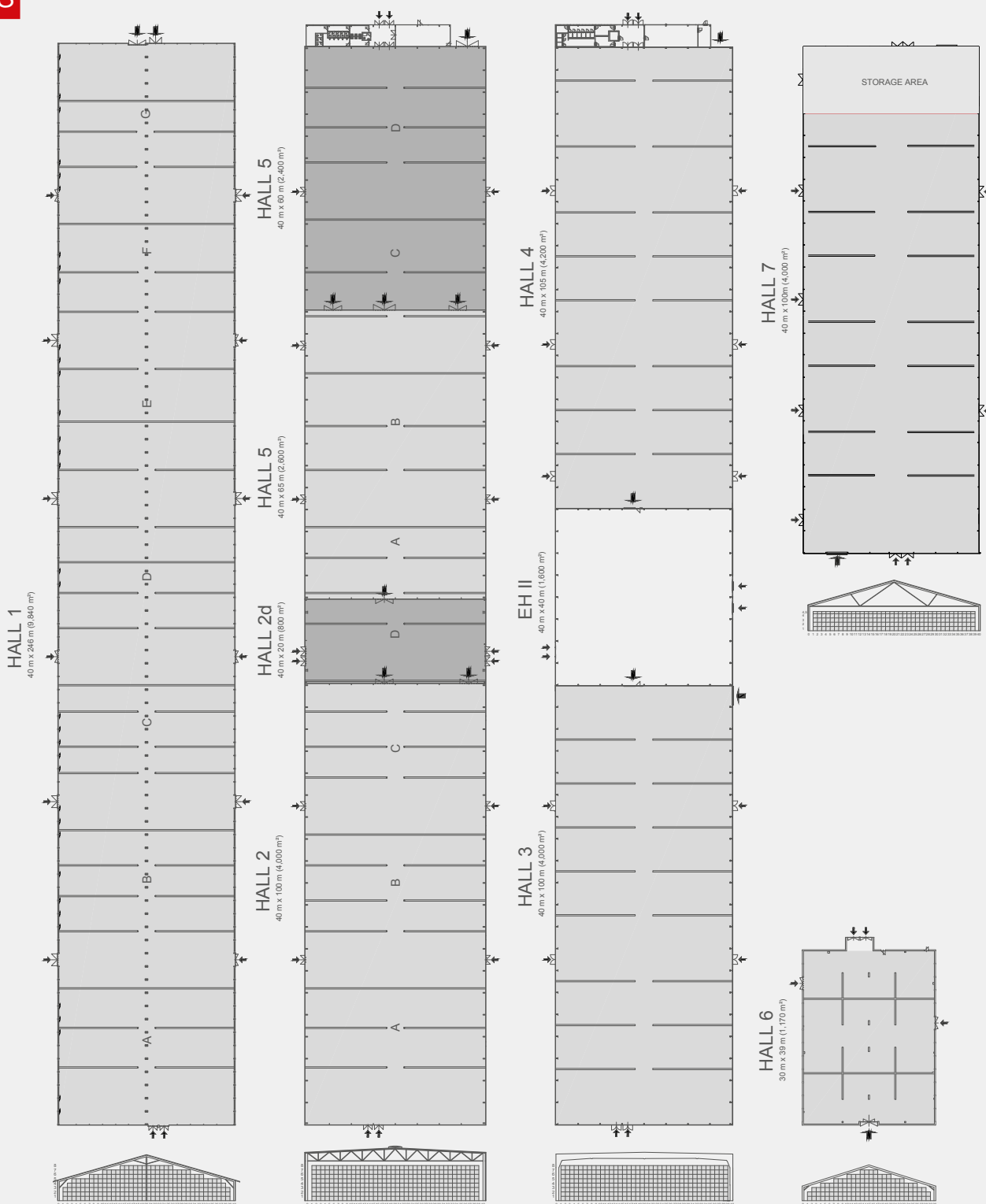
page no. 1

PVA
EXPO PRAGUE

A place where
you'll get noticed

Technical Specification of the PVA EXPO PRAGUE Exhibition Centre

Halls



www.pvaexpo.cz

PVA EXPO PRAGUE

Beranových 667,
199 00 Prague 9,
Czech Republic

GPS:

Loc: 50°7'41.662"N,
14°30'51.679"

page no. 2

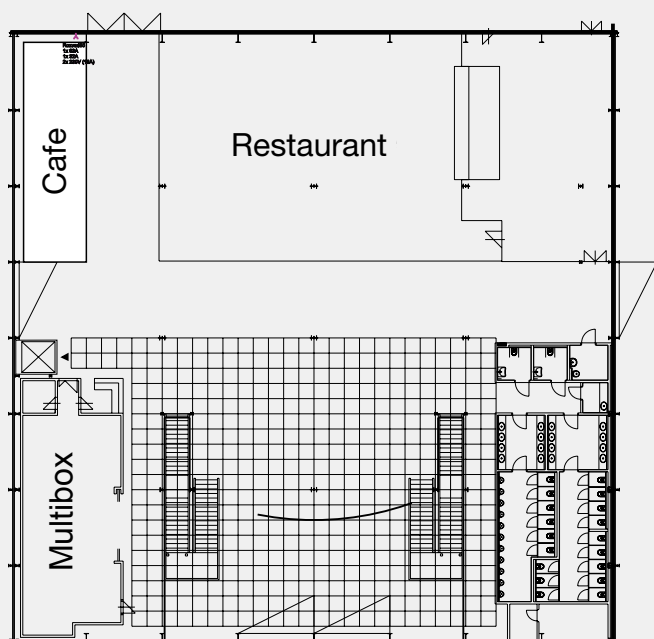
PVA
EXPO PRAGUE

A place where
you'll get noticed

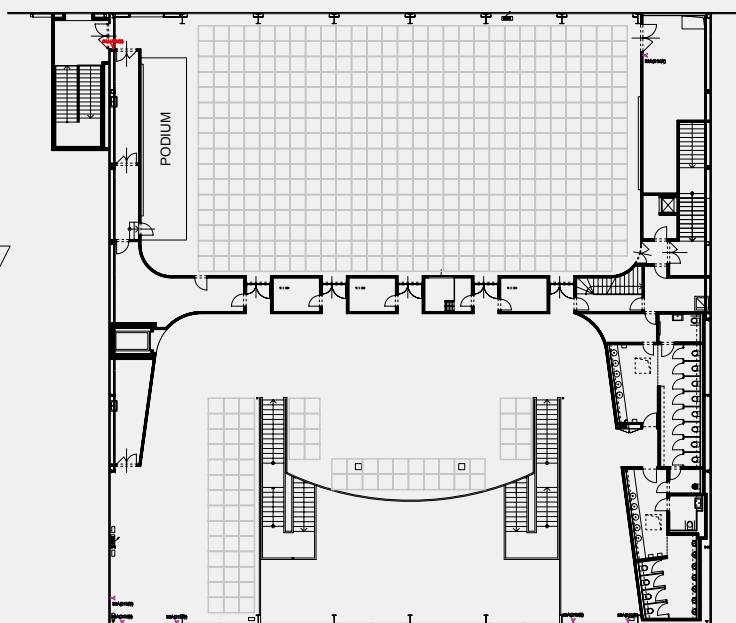
Technical Specification of the PVA EXPO PRAGUE Exhibition Centre

Entrance Hall II, Congress Hall

Ground Floor



1st Floor

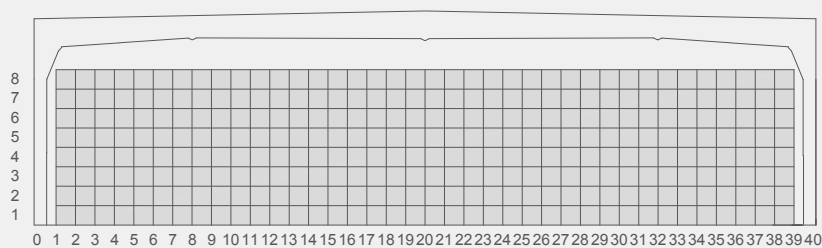
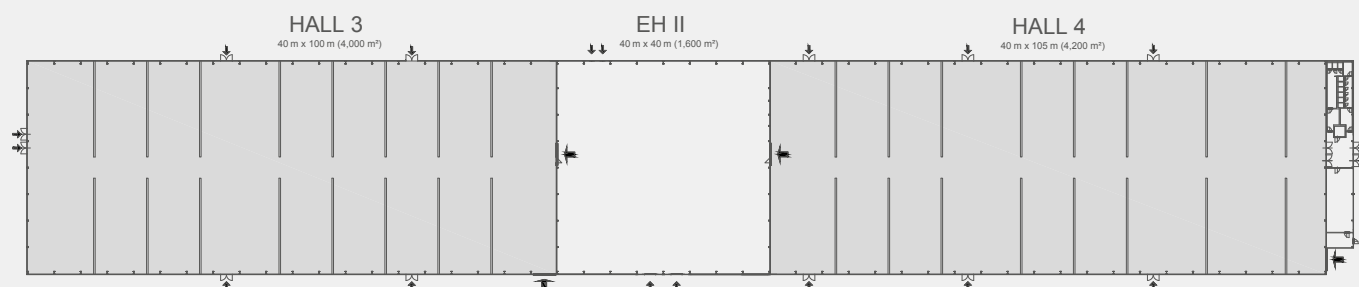


Entrance Hall II	
Gross Exhibition area:	1,600 m ²
Clearance Height:	5 m
Technical Entry:	from Hall 3
Entry for Personnel and Visitors:	double leaf doors
Floor:	industrial concrete slab
Allowable Bearing Capacity of the Floor	800 – 1,500 kg/m ² (capacity can be technologically increased, according to requirements of the exhibits)
Installation upon request:	connections of water, electric current, internet
Lighting:	natural light (glass walls), artificial light - fluorescent lamps
Heating:	hot-air, air-conditioning (Congress Hall)
Ventilation:	yes
Air-conditioning in the Congress Hall and Conference Room:	yes
Additional equipment:	Fixed restaurant and coffee place
	Cloakroom
	Information counter



Technical Specification of the PVA EXPO PRAGUE Exhibition Centre

Hall 3 / Hall 4



Hall 3 and Hall 4:	
Gross Exhibition area:	4,000 m ² + 4,200 m ²
Clearance Height of the Building:	8.5 m across the entire width
Profiles of Entries:	double leaf doors and rolling gate
Floor:	industrial with gently structural COMFLOOR surface, with gutters; the slope of 1/140 of the length of the hall
Allowable Bearing Capacity of the Floor:	1,500 kg/m ² (capacity can be technologically increased, according to requirements of the exhibits)
Installation:	connections of water, electric current, compressed air, telephone, internet
Lighting:	20% natural light - ceiling skylights; artificial light - fluorescent light
Heating:	hot air gas heating
Ventilation:	yes



www.pvaexpo.cz

PVA EXPO PRAGUE
Beranových 667,
199 00 Prague 9,
Czech Republic

GPS:
Loc: 50°7'41.662"N,
14°30'51.679"

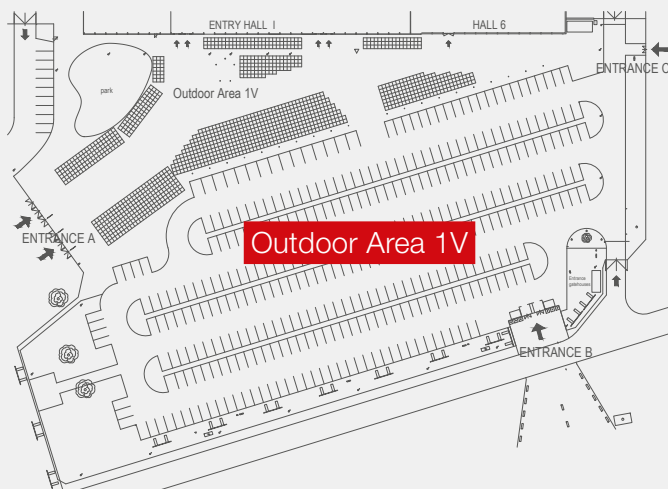
PVA
EXPO PRAGUE

A place where
you'll get noticed

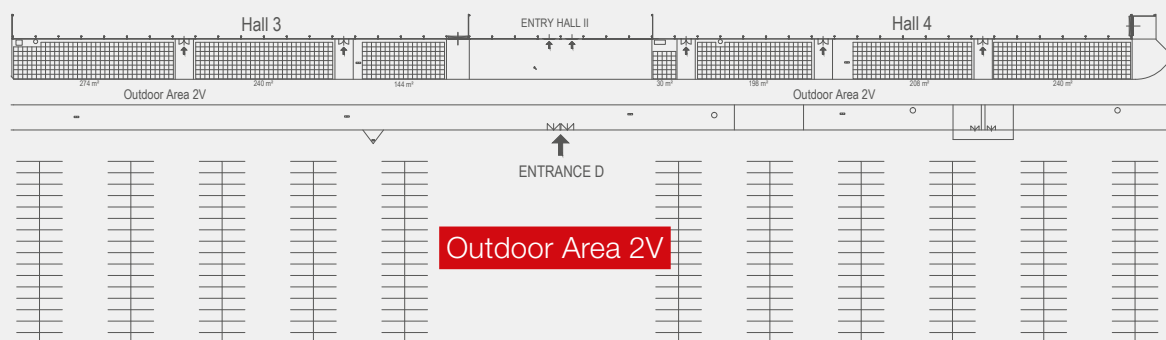
page no. 7

Technical Specification of the PVA EXPO PRAGUE Exhibition Centre

Outdoor Area in PVA EXPO PRAGUE



Outdoor Area 1V:	
Total Gross Area:	3,000 m ²
The Area Surface:	interlocking tiles
Installation after Consultation:	connection of electric power, water connection – except from the winter season, compressed air - mobile compressors
Lighting:	lighting around the perimeter of the area



Outdoor Area 2V:	
Total Gross Area:	1,330 m ²
The Area Surface:	interlocking tiles
Installation after Consultation:	connection of electric power, water connection – except from the winter season, compressed air - mobile compressors
Lighting:	lighting around the perimeter of the area

